

PART 7. TRAFFIC CONTROLS FOR SCHOOL AREAS**TABLE OF CONTENTS**

	<u>Page</u>
CHAPTER 7A.	GENERAL
Section 7A.01	Need for Standards..... 7A-1
Section 7A.02	School Routes and Established School Crossings 7A-1
Section 7A.03	School Crossing Control Criteria..... 7A-2
Section 7A.04	Scope..... 7A-2
Section 7A.05	Application of Standards 7A-2
Section 7A.06	Engineering Study Required 7A-2
Section 7A.07	Maintenance of Traffic Control Devices 7A-2
Section 7A.08	Placement Authority 7A-2
Section 7A.09	Unauthorized Devices and Messages 7A-3
Section 7A.10	Meaning of Standard, Guidance, Option, and Support..... 7A-3
CHAPTER 7B.	SIGNS
Section 7B.01	Size of School Signs 7B-1
Section 7B.02	Illumination and Reflectorization 7B-1
Section 7B.03	Position of Signs 7B-1
Section 7B.04	Height of Signs 7B-1
Section 7B.05	Installation of Signs 7B-1
Section 7B.06	Lettering..... 7B-1
Section 7B.07	Sign Color for School Warning Signs 7B-3
Section 7B.08	School Advance Warning Assembly (S1-1 with Supplemental Plaque) 7B-3
Section 7B.09	School Crosswalk Warning Assembly (S1-1 with Diagonal Arrow) 7B-7
Section 7B.10	SCHOOL BUS STOP/TURN AHEAD Signs (S3-1, S3-H2)..... 7B-8
Section 7B.11	School Speed Limit Assembly (S4-1, S4-3, S4-H5, S4-6, S5-H3, S5-H4, S5-H5)..... 7B-8
Section 7B.12	Reduced Speed School Zone Ahead Sign (S4-5, S4-5a) 7B-10
Section 7B.13	END SCHOOL ZONE Sign (S5-2) 7B-10
Section 7B.14	Parking and Stopping Signs (R7 and R8 Series) 7B-10
Section 7B.15	STOP FOR SCHOOL BUS LOADING OR UNLOADING Sign (R16-H3) 7B-11
CHAPTER 7C.	MARKINGS
Section 7C.01	Functions and Limitations 7C-1
Section 7C.02	Standardization of Application 7C-1
Section 7C.03	Crosswalk Markings 7C-1
Section 7C.04	Stop and Yield Lines..... 7C-2
Section 7C.05	Curb Markings for Parking Regulations 7C-3
Section 7C.06	Pavement Word and Symbol Markings 7C-3
CHAPTER 7D.	SIGNALS
Section 7D.01	General..... 7D-1
CHAPTER 7E.	CROSSING SUPERVISION
Section 7E.01	Types of Crossing Supervision 7E-1
Section 7E.02	Adult Crossing Guards..... 7E-1
Section 7E.03	Qualifications of Adult Crossing Guards 7E-1
Section 7E.04	Uniform of Adult Crossing Guards and Student Patrols 7E-1
Section 7E.05	Operating Procedures for Adult Crossing Guards 7E-2

Section 7E.06	Uniformed Law Enforcement Officers	7E-2
Section 7E.07	Student Patrols	7E-2
Section 7E.08	Choice of Student Patrols	7E-3
Section 7E.09	Operating Procedures for Student Patrols	7E-3

CHAPTER 7F.**GRADE-SEPARATED CROSSINGS**

Section 7F.01	Function	7F-1
Section 7F.02	Types of Grade-Separated Crossings.....	7F-1
Section 7F.03	Criteria for Use of Grade-Separated Crossings	7F-1

FIGURES**CHAPTER 7A.****GENERAL**

Figure 7A-1	Example of School Route Plan Map.....	7A-3
-------------	---------------------------------------	------

CHAPTER 7B.**SIGNS**

Figure 7B-1	School Area Signs.....	7B-4
Figure 7B-2	Examples of Signing for School Crosswalk Warning Assembly	7B-5
Figure 7B-3	Examples of Signing for School Area Traffic Control with School Speed Limits	7B-6
Figure 7B-4	In-Street Signs in School Areas	7B-7

CHAPTER 7C.**MARKINGS**

Figure 7C-1	Two-Lane Pavement Marking of “SCHOOL”	7C-4
-------------	---	------

TABLES**CHAPTER 7B.****SIGNS**

Table 7B-1	Size of School Area Signs and Plaques	7B-2
------------	---	------

CHAPTER 7A. GENERAL

Section 7A.01 Need for Standards

Support:

It is important to stress that regardless of the school location, the best way to achieve reasonably safe and effective traffic control is through the uniform application of realistic policies, practices, and standards developed through engineering judgment.

Pedestrian safety depends upon public understanding of accepted methods for efficient traffic control. This principle is especially important in the control of pedestrians, bicycles, and other vehicles in the vicinity of schools. Neither pedestrians on their way to or from school nor road users can be expected to move safely in school areas unless they understand both the need for traffic controls and how these controls function for their benefit.

Procedures and devices that are not uniform might cause confusion among pedestrians and other road users, prompt wrong decisions, and contribute to crashes. To achieve uniformity of traffic control in school areas, comparable traffic situations need to be treated in a consistent manner. Each traffic control device and control method described in Part 7 fulfills a specific function related to specific traffic conditions.

A uniform approach to school area traffic controls assures the use of similar controls for similar situations (which promotes uniform behavior on the part of motorists, pedestrians, and bicyclists).

A school traffic control plan permits the orderly review of school area traffic control needs, and the coordination of school/pedestrian safety education and engineering activities.

Guidance:

A school route plan for each school serving elementary to high school students should be prepared in order to develop uniformity in the use of school area traffic controls and to serve as the basis for a school traffic control plan for each school.

The school route plan, developed in a systematic manner by the school, law enforcement, and traffic officials responsible for school pedestrian safety, should consist of a map (see Figure 7A-1) showing streets, the school, existing traffic controls, established school walk routes, and established school crossings.

The type(s) of school area traffic control devices used, either warning or regulatory, should be related to the volume and speed of vehicular traffic, street width, and the number and age of the students using the crossing.

School area traffic control devices should be included in a school traffic control plan.

Support:

Reduced speed limit signs for school areas and crossings are included in this Manual solely for the purpose of standardizing signing for these zones and not as an endorsement of mandatory reduced speed zones.

Section 7A.02 School Routes and Established School Crossings

Support:

The planning criterion for school walk routes might make it necessary for children to walk an indirect route to an established school crossing located where there is existing traffic control and to avoid the use of a direct crossing where there is no existing traffic control.

Guidance:

School walk routes should be planned to take advantage of existing traffic controls.

The following factors should be considered when determining the feasibility of requiring children to walk a longer distance to a crossing with existing traffic control:

- A. The availability of adequate sidewalks or off-roadway sidewalk areas to and from the location with existing control;
- B. The number of students using the crossing;
- C. The age levels of the students using the crossing; and
- D. The total extra walking distance.

Section 7A.03 School Crossing Control Criteria

Support:

Alternate gaps and blockades are inherent in the traffic stream and are different at each crossing location. For safety, students need to wait for a gap in traffic that is of sufficient duration to permit reasonably safe crossing. When the delay between the occurrence of adequate gaps becomes excessive, students might become impatient and endanger themselves by attempting to cross the street during an inadequate gap.

A recommended method for determining the frequency and adequacy of gaps in the traffic stream is given in the Institute of Transportation Engineers' publication, "School Trip Safety Program Guidelines" (see Section 1A.11).

Section 7A.04 Scope

Standard:

Part 7 sets forth basic principles and prescribes standards that shall be followed in the design, application, installation, and maintenance of all traffic control devices (including signs, signals, and markings) and other controls (including adult crossing guards, student patrols, and grade-separated crossings) required for the special pedestrian conditions in school areas.

Option:

In-roadway signs for school traffic control areas may be used consistent with the requirements of Sections 2B.12, 7B.08, and 7B.09.

Support:

Requirements discussed in Chapter 2A and Section 2B.05 are applicable in school areas.

Section 7A.05 Application of Standards

Support:

Sections 1A.02 and 1A.07 contain information regarding the application of standards.

Section 7A.06 Engineering Study Required

Support:

Section 1A.09 contains information regarding engineering studies.

Section 7A.07 Maintenance of Traffic Control Devices

Support:

Section 1A.05 contains information regarding the maintenance of traffic control devices.

Section 7A.08 Placement Authority

Support:

Section 1A.08 contains information regarding placement authority for traffic control devices.

Section 7A.09 Unauthorized Devices and Messages

Support:

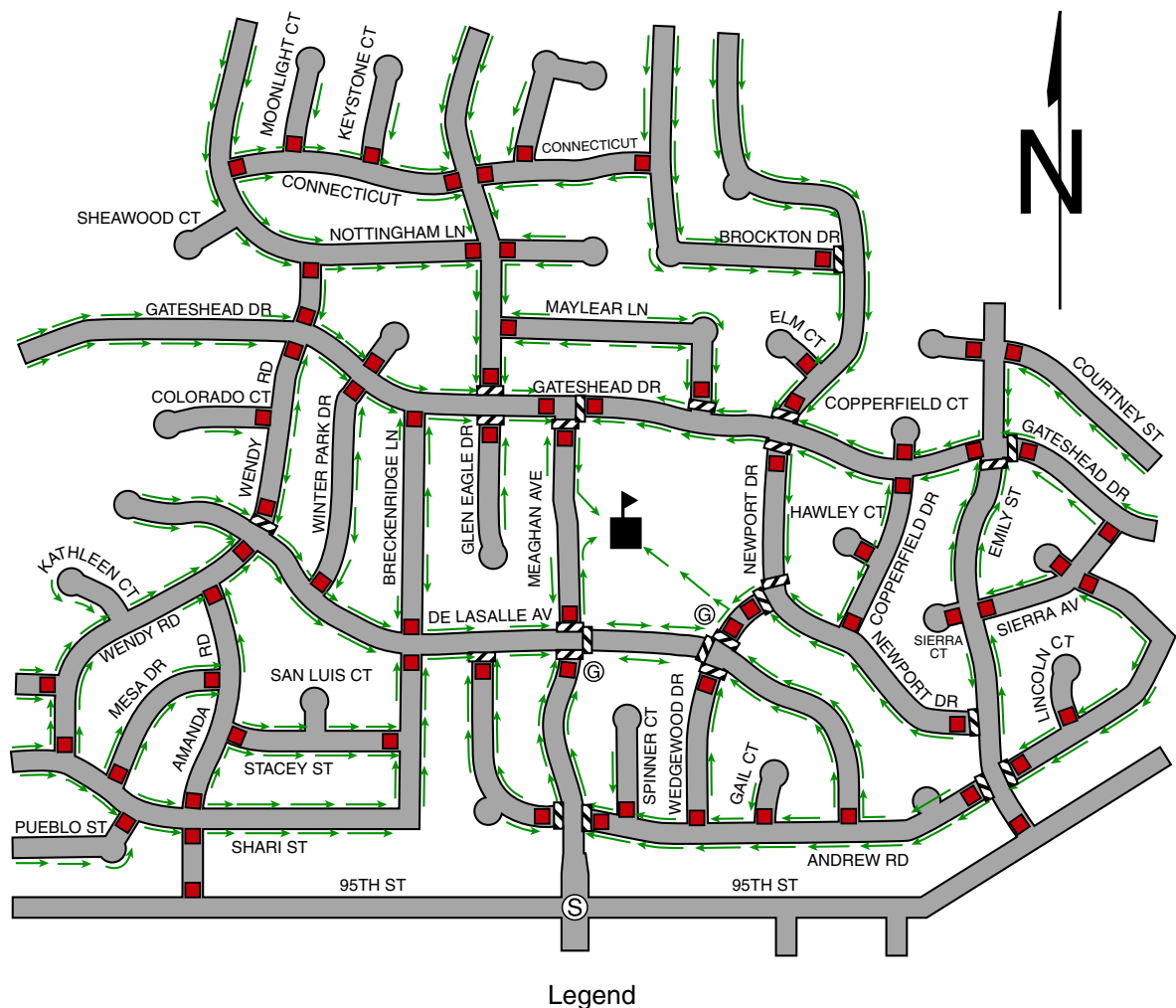
Sections 1A.01 and 1A.08 contain information regarding unauthorized devices and messages.

Section 7A.10 Meaning of Standard, Guidance, Option, and Support

Support:

The introduction to this Manual contains information regarding the meaning of the headings Standard, Guidance, Option, and Support, and the use of the words shall, should, and may.

Figure 7A-1. Example of School Route Plan Map



Intentionally blank.

CHAPTER 7B. SIGNS

Section 7B.01 Size of School Signs

Standard:

The sizes of signs and plaques to be used on conventional roadways in school areas shall be as shown in Table 7B-1.

The Conventional Road sign size shall be used on public roads, streets, and highways unless engineering judgment determines that a Minimum or Oversized sign size would be more appropriate.

The Oversized sign size shall be used on expressways.

Option:

The Oversized sign size may be used for applications that require increased emphasis, improved recognition, or increased legibility.

The Minimum sign size may be used on local residential streets, in urban areas, and where there are low traffic volumes and low vehicle speeds, as determined by engineering judgment.

Section 7B.02 Illumination and Reflectorization

Standard:

The signs used for school area traffic control shall be retroreflectorized or illuminated.

Section 7B.03 Position of Signs

Guidance:

Signs should be placed in positions where they will convey their messages most effectively without restricting lateral clearance or sight distances. Placement therefore should consider highway design, alignment, vehicle speed, and roadside development.

Signs should have a maximum practical clearance from the edge of the traveled way for the safety of vehicles that might leave the roadway and strike the sign supports. Except as noted in the Option, signs should not be closer than 1.8 m (6 ft) from the edge of a paved shoulder, or if none, 3.7 m (12 ft) from the edge of the traveled way.

Option:

In urban areas, a lesser clearance of not less than 0.6 m (2 ft) from the face of the curb may be used. In urban areas, where sidewalk width is limited or existing poles are close to the curb, a clearance of 0.3 m (1 ft) from the curb face may be used.

Section 7B.04 Height of Signs

Support:

Section 2A.18 contains information regarding the mounting height of signs.

Section 7B.05 Installation of Signs

Support:

Section 2A.16 contains information regarding the installation of signs.

Section 7B.06 Lettering

Support:

The "Sign Design Manual" (SDM) (see Section 1A.11) contains information regarding sign lettering.

Table 7B-1. Size of School Area Signs and Plaques

Sign	Sign Code	Section	Conventional Road	Minimum	Oversized
School Advance Warning	S1-1	7B.08	900 x 900 mm (36 x 36 in)	750 x 750 mm (30 x 30 in)	1200 x 1200 mm (48 x 48 in)
SCHOOL BUS STOP/TURN AHEAD	S3-1 S3-H2	7B.10	750 x 750 mm (30 x 30 in)	—	900 x 900 mm (36 x 36 in)
END SCHOOL ZONE	S5-2	7B.13	600 x 750 mm (24 x 30 in)	—	900 x 1200 mm (36 x 48 in)
Reduced Speed School Zone Ahead	S4-5 S4-5a	7B.12	900 x 900 mm (36 x 36 in)	750 x 750 mm (30 x 30 in)	1200 x 1200 mm (48 x 48 in)
SCHOOL SPEED LIMIT DURING RESTRICTED HOURS	S5-H3	7B.11	600 x 1200 mm (24 x 48 in)	—	900 x 1875 mm (36 x 78 in)
School Speed Limit Sign (variable display)	S5-H4	7B.11	600 x 950 mm (24 x 38 in)	—	900 x 1500 mm (36 x 60 in)
School Speed Limit Sign (variable display with beacons in the face of the sign)	S5-H5	7B.11	600 x 1050 mm (24 x 42 in)	—	900 x 1200 mm (36 x 48 in)
In-Street Pedestrian Crossing	R1-6	7B.09	300 X 900 mm (12 X 36 in)	—	—
Speed Limit (School Use)	R2-1	7B.11	600 x 750 mm (24 x 30 in)	—	900 x 1200 mm (36 x 48 in)
STOP FOR SCHOOL BUS LOADING OR UNLOADING...	R16-H3	7B.15	750 x 750 mm (30 x 30 in)	—	1050 x 1050 mm (42 x 42 in)

Plaque	Sign Code	Section	Conventional Road	Minimum	Oversized
X:XX - X:XX AM X:XX - X:XX PM	S4-1	7B.11	600 x 250 mm (24 x 10 in)	—	900 x 450 mm (36 x 18 in)
SCHOOL	S4-3	7B.11	600 x 200 mm (24 x 8 in)	—	900 x 300 mm (36 x 12 in)
DURING RESTRICTED HOURS	S4-H5	7B.11	600 x 250 mm (24 x 10 in)	—	900 x 375 mm (36 x 18 in)
MON - FRI	S4-6	7B.11	600 x 250 mm (24 x 10 in)	—	900 x 450 mm (36 x 18 in)
XXX FEET	W16-2	7B.08	600 x 450 mm (24 x 18 in)	—	750 x 600 mm (30 x 24 in)
XXX FT	W16-2a	7B.08	600 x 300 mm (24 x 12 in)	—	750 x 450 mm (30 x 18 in)
Diagonal Arrow	W16-7p	7B.09	600 x 300 mm (24 x 12 in)	—	750 x 450 mm (30 x 18 in)
Diagonal Arrow (Optional Size)	W16-7p	7B.09	525 x 375 mm (21 x 15 in)	—	—
AHEAD	W16-9p	7B.08	600 x 300 mm (24 x 12 in)	—	750 x 450 mm (30 x 18 in)

Section 7B.07 Sign Color for School Warning Signs

Standard:

Except as noted in the Option, school warning signs shall have a yellow background with a black legend and border unless otherwise stated in this Manual for a specific sign.

Option:

All school warning signs in addition to the following signs may have a fluorescent yellow-green background with a black legend and border:

- A. School Advance Warning sign (S1-1);
- B. SCHOOL BUS STOP/TURN AHEAD signs (S3-1, S3-H2);
- C. SCHOOL plaque (S4-3);
- D. The "SCHOOL" portion of the School Speed Limit signs (S5-1, S5-H3, S5-H4, S5-H5);
- E. XXX FEET plaque (W16-2 series);
- F. AHEAD plaque (W16-9p);
- G. Diagonal Arrow plaque (W16-7p); and
- H. Reduced Speed School Zone Ahead sign (S4-5, S4-5a).

Guidance:

When the fluorescent yellow-green background color is used, a systematic approach featuring one background color within a zone or area should be used. The mixing of standard yellow and fluorescent yellow-green backgrounds within a zone or area should be avoided.

Section 7B.08 School Advance Warning Assembly (S1-1 with Supplemental Plaque)

Guidance:

The School Advance Warning assembly (see Figure 7B-1) should be installed in advance of locations where school buildings or grounds are adjacent to the highway, except where a physical barrier such as fencing separates school children from the highway.

Standard:

The School Advance Warning assembly shall be used in advance of any installation of the School Crosswalk Warning assembly (see Figure 7B-2), or the School Speed Limit assembly (see Figure 7B-3).

If used, the School Advance Warning assembly shall be installed not less than 45 m (150 ft) nor more than 210 m (700 ft) in advance of the school grounds, school crossings, or School Speed Limit assembly (see Figure 7B-1).

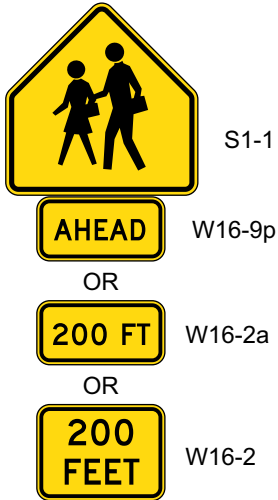
If used, the School Advance Warning assembly shall consist of a School Advance Warning (S1-1) sign supplemented with a plaque with the legend AHEAD (W16-9p) or XXX FEET (W16-2 or W16-2a) to provide advance notice to road users of crossing activity.

.Option:

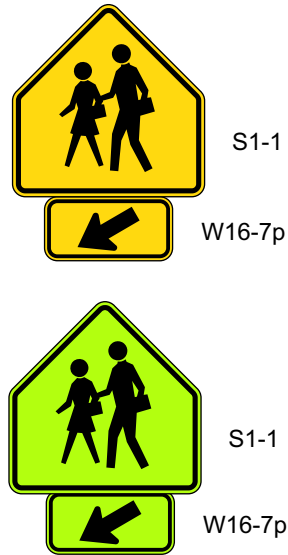
A 300 mm (12 in) reduced size in-street School Advance Warning (S1-1) sign (see Figure 7B-4), installed in compliance with the mounting height and breakaway requirements for In-Street Pedestrian Crossing (R1-6 or R1-6a) signs (see Section 2B.12), may be used in advance of a school crossing to supplement the ground-mounted school warning signs. A 300 x 150 mm (12 x 6 in) reduced size AHEAD (W16-9p) plaque may be mounted below the reduced size in-street School Advance Warning (S1-1) sign.

Figure 7B-1. School Area Signs

**School Advance
Warning Assembly**

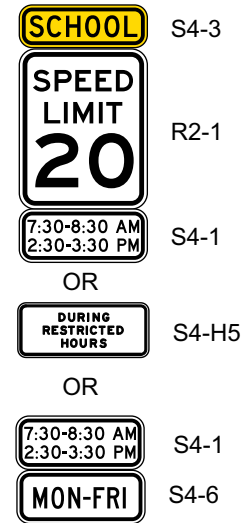


**School Crosswalk
Warning Assembly**



Example of Optional
Flourescent Yellow-Green

**School Speed
Limit Assembly**



S3-1



S3-H2



S4-5



S4-5a



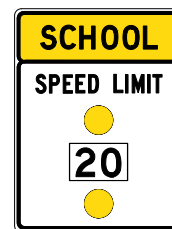
S5-2



S5-H3 Assembly
(Shown with Beacons)



S5-H4



S5-H5

Figure 7B-2. Examples of Signing for School Crosswalk Warning Assembly

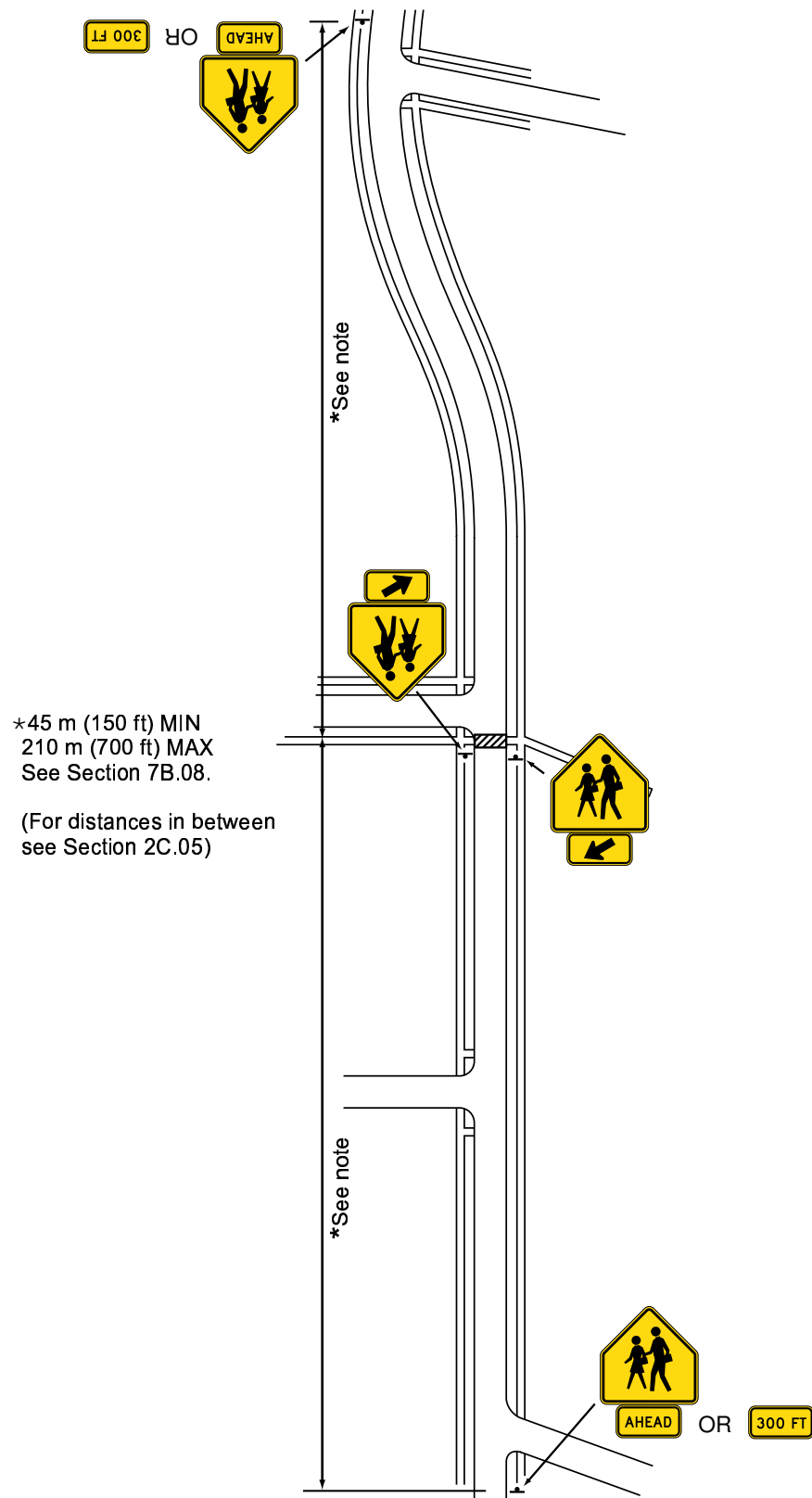
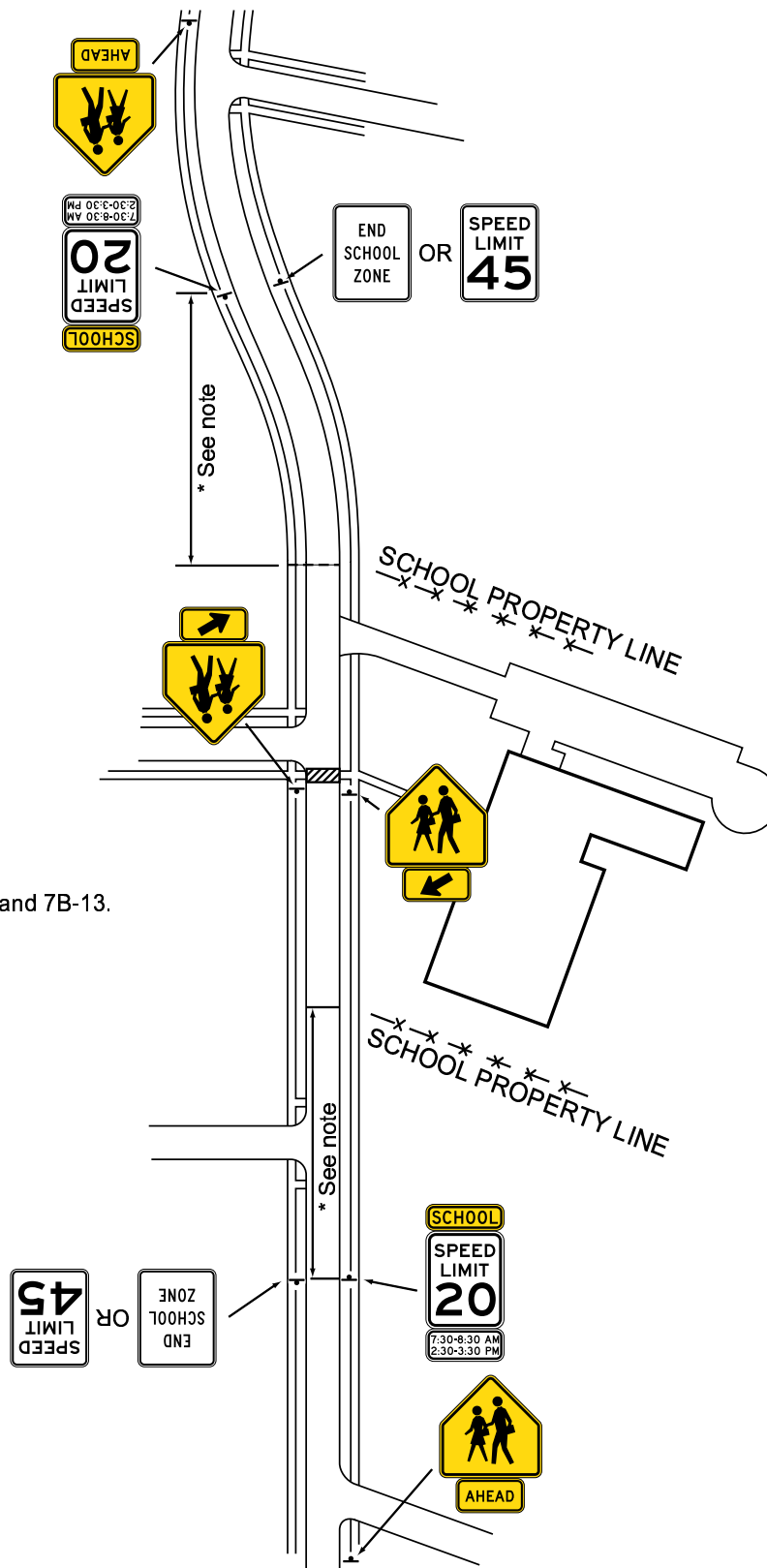
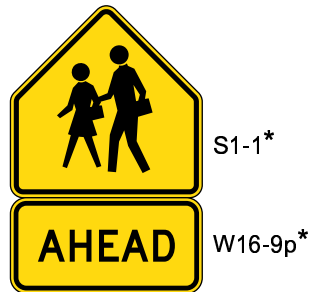


Figure 7B-3. Examples of Signing for School Area Traffic Control with School Speed Limits

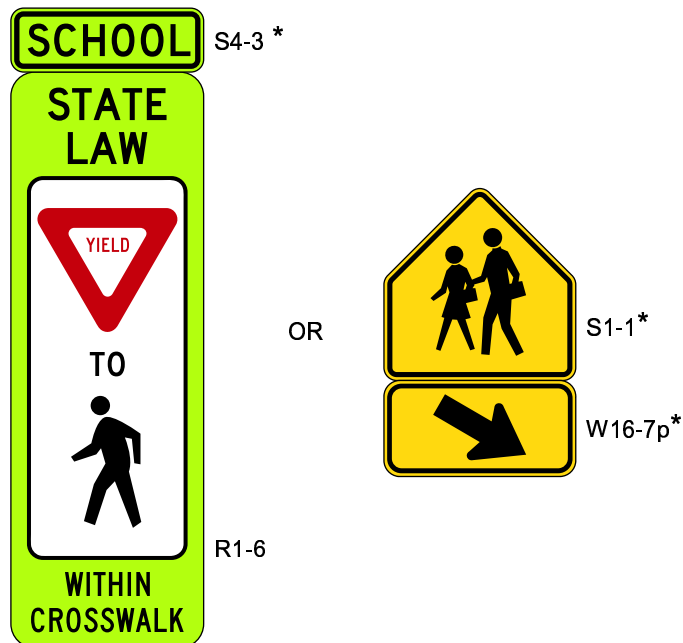


* See Sections 7B.11 and 7B-13.

OMUTCD - English units are preferred.

Figure 7B-4. In-Street Signs in School Areas**a - In advance of the school crossing**

* Reduced size signs:
 S1-1 300 x 300 mm (12 x 12)
 S4-3 300 x 100 mm (12 x 4)
 W16-7p 300 x 150 mm (12 x 6)
 W16-9p 300 x 150 mm (12 x 6)

b - At the school crossing**Section 7B.09 School Crosswalk Warning Assembly (S1-1 with Diagonal Arrow)****Standard:**

If used, the School Crosswalk Warning assembly (see Figure 7B-1) shall be installed at the marked crosswalk, or as close to it as possible, and shall consist of a School Advance Warning (S1-1) sign supplemented with a diagonal downward pointing arrow (W16-7p) plaque to show the location of the crossing.

The School Crosswalk Warning assembly shall not be used at marked crosswalks other than those adjacent to schools and those on established school pedestrian routes.

The School Crosswalk Warning assembly shall not be installed on approaches controlled by a STOP sign.

Guidance:

The School Crosswalk Warning assembly should be installed at marked crosswalk(s), including those at signalized locations, used by students going to and from school (see Figure 7B-2) as determined by an engineering study.

Option:

The In-Street Pedestrian Crossing (R1-6 or R1-6a) sign (see Section 2B.12) may be used at unsignalized school crossings. When used at a school crossing, a 300 x 100 mm (12 x 4 in) SCHOOL (S4-3) plaque (see Figure 7B-4) may be mounted above the sign.

A 300 mm (12 in) reduced size School Advance Warning (S1-1) sign (see Figure 7B-4) may be used at an unsignalized school crossing instead of the In-Street Pedestrian Crossing (R1-6 or R1-6a) sign. A 300 x 150 mm (12 x 6 in) reduced size Diagonal Arrow (W16-7p) plaque may be mounted below the reduced size in-street School Advance Warning (S1-1) sign.

Standard:

If an In-Street Pedestrian Crossing sign or a reduced size in-street School Advance Warning (S1-1) sign is placed in the roadway, the sign support shall comply with the mounting height and breakaway requirements for In-Street Pedestrian Crossing (R1-6 or R1-6a) signs (see Section 2B.12).

The In-Street Pedestrian Crossing sign and the reduced size in-street School Advance Warning (S1-1) sign shall not be used at signalized locations.

Section 7B.10 SCHOOL BUS STOP/TURN AHEAD Signs (S3-1, S3-H2)**Guidance:**

The SCHOOL BUS STOP AHEAD (S3-1) or SCHOOL BUS TURN AHEAD (S3-H2) sign (see Figure 7B-1) should be installed in advance of locations where a school bus, when turning or when stopped to pick up or discharge passengers, is not visible to road users for a distance of 150 m (500 ft) in advance and where there is no opportunity to relocate the bus stop (or turn) to provide 150 m (500 ft) of visibility.

Standard:

These signs shall be erected only on the basis of a traffic engineering study and after the school transportation officials have confirmed the need for the stop or turn.

Guidance:

The need for these signs at existing locations should be reevaluated periodically.

Section 7B.11 School Speed Limit Assembly (S4-1, S4-3, S4-H5, S4-6, S5-H3, S5-H4, S5-H5)**Support:**

Section 4511.21(B)(1)(a) of the Ohio Revised Code (O.R.C.) establishes a 20 mile per hour speed limit for School Zones, and establishes when that speed limit is in effect (see Appendix B2).

Standard:

A School Speed Limit assembly (see Figure 7B-1) or a School Speed Limit (S5-1) sign (see Figure 7B-1) shall be used to indicate the speed limit for a School Zone established per Section 4511.21 of the O.R.C. The School Speed Limit assembly or School Speed Limit sign shall be placed at or as near as practical to the point where the reduced speed zone begins.

Support:

Section 4511.21(B)(1)(c) of the O.R.C. defines a School Zone and establishes a means by which the Ohio Department of Transportation (ODOT), upon request from a local authority, may approve extensions of the traditional School Zone boundaries. Section 4511.21 (B)(2) also provides that ODOT, upon request, may designate a School Zone on a portion of a state route for certain crosswalks customarily used by children going to or leaving a school.

Complete instructions and a form for submitting an application for approval of a non-traditional (extended) School Zone are available from the ODOT Office of Traffic Engineering and each ODOT District Office.

Guidance:

Requests for extensions of the traditional School Zone boundaries should be submitted to the ODOT District Deputy Director in accordance with the procedure described in Part 7 of the ODOT "Traffic Engineering Manual" (TEM) (see Section 1A.11).

Standard:

The School Speed Limit assembly shall be either a fixed-message sign assembly or a changeable message sign.

The fixed-message School Speed Limit assembly shall consist of a top plaque (S4-3) with the legend SCHOOL, a Speed Limit (R2-1) sign, and a bottom plaque (S4-1, S4-H5, or S4-6) (see Figure 7B-1).

Option:

Changeable message signs (see Sections 2A.07 and 6F.55) may be used to inform drivers of the special school speed limit. If the sign is internally illuminated, it may have a white legend on a black background. Changeable message signs with flashing beacons may be used for the more critical situations, where greater emphasis of the special school speed limit is needed.

Guidance:

Even though it might not always be practical because of special features to make changeable message signs conform in all respects to the accepted standards, during the periods that the school speed limit is in effect, their basic shape, message, legend layout, and colors should conform to the standards for fixed-message signs.

A confirmation beacon or device to indicate that the speed limit message is in operation should be considered for inclusion on the back of the changeable message sign.

Option:

Fluorescent yellow-green pixels may be used when school-related messages are shown on a changeable message sign.

Changeable message signs may use blank-out messages or other methods in order to display the school speed limit only during the periods it applies.

Changeable message signs that display the speed of approaching drivers (see Section 2B.13) may be used in a school speed limit zone.

A Speed Limit Sign Beacon also may be used to identify the periods that the school speed limit is in effect. The lenses of the Speed Limit Sign Beacon may be positioned within the face of the School Speed Limit (S5-H5) sign (see Figure 7B-1).

A FINES HIGHER (R2-6) sign (see Section 2B.17) may be used to advise road users when increased fines are imposed for traffic violations in school zones.

Standard:

Where a side street intersects the highway within the School Zone, additional School Speed Limit signs shall be erected on the highway as needed to notify motorists entering the School Zone from the side street of the School Zone speed limit. The School Speed Limit sign shall be mounted along the right hand side of the roadway.

Option:

Where side mounting does not provide adequate sight distance or is otherwise impractical, the School Speed Limit sign may be mounted overhead.

Guidance:

Overhead mounting should be used on all divided and four-lane highways.

There should be no Speed Limit signs (except School Speed Limit signs) erected or in place within the limits of the School Zone.

There should be no Speed Limit signs within the space between either the School Advance Warning assembly (S1-1 with Supplemental Plaque) or the Reduced Speed School Zone Ahead sign and the beginning of the School Zone, or closer than 150 m (500 ft) in advance of the School Advance Warning assembly or the Reduced Speed School Zone Ahead sign.

Section 7B.12 Reduced Speed School Zone Ahead Sign (S4-5, S4-5a)**Option:**

The Reduced Speed School Zone Ahead (S4-5, S4-5a) sign (see Figure 7B-1) may be used to inform road users of a reduced speed zone when engineering judgment indicates that advance notice would be appropriate.

Standard:

If used, the Reduced Speed School Zone Ahead sign shall be followed by a School Speed Limit sign or a School Speed Limit assembly.

The speed limit displayed on the Reduced Speed School Zone Ahead sign shall be identical to the speed limit displayed on the subsequent School Speed Limit sign or School Speed Limit assembly.

Section 7B.13 END SCHOOL ZONE Sign (S5-2)**Standard:**

The end of an authorized and posted school speed zone shall be marked with a standard Speed Limit sign showing the speed limit for the section of highway that follows or with an END SCHOOL ZONE (S5-2) sign (see Figure 7B-1).

When the end of the school zone is marked with an END SCHOOL ZONE sign, and the adjacent section of highway is an authorized Speed Zone, a Speed Limit sign shall be placed just beyond the end of the School Zone.

Option:

When the END SCHOOL ZONE sign is used, a Speed Limit sign may be placed just beyond the end of the School Zone to post a statutory speed limit.

Section 7B.14 Parking and Stopping Signs (R7 and R8 Series)**Option:**

Parking and stopping regulatory signs may be used to prevent parked or waiting vehicles from blocking pedestrians' views, and drivers' views of pedestrians, and to control vehicles as a part of the school traffic plan.

Support:

Parking signs and other signs governing the stopping and standing of vehicles in school areas cover a wide variety of regulations. Typical examples of regulations are as follows:

- A. No Parking X:XX AM to X:XX PM School Days Only;
- B. No Stopping X:XX AM to X:XX PM School Days Only;
- C. X Min Loading X:XX AM to X:XX PM School Days Only; and
- D. No Standing X:XX AM to X:XX PM School Days Only.

Sections 2B.39, 2B.40, and 2B.41 contain information regarding the signing of parking regulations in school zone areas.

Section 7B.15 STOP FOR SCHOOL BUS LOADING OR UNLOADING Sign (R16-H3)

Option:

The STOP FOR SCHOOL BUS LOADING OR UNLOADING (R16-H3) sign (see Appendix C) may be used to remind road users of the provisions of Section 4511.75 of the Ohio Revised Code (see Appendix B2) prohibiting passing of school buses in either direction on undivided highways when loading or unloading school children.

Intentionally blank.

CHAPTER 7C. MARKINGS

Section 7C.01 Functions and Limitations

Support:

Markings have definite and important functions in a proper scheme of school area traffic control. In some cases, they are used to supplement the regulations or warnings provided by other devices, such as traffic signs or signals. In other instances, they are used alone and produce results that cannot be obtained by the use of any other device. In such cases they serve as an effective means of conveying certain regulations, guidance, and warnings that could not otherwise be made clearly understandable.

Pavement markings have limitations. They might be obliterated by snow, might not be clearly visible when wet, and might not be durable when subjected to heavy traffic. In spite of these limitations, they have the advantage, under favorable conditions, of conveying warnings or information to the road user without diverting attention from the road.

Section 7C.02 Standardization of Application

Standard:

Each standard marking shall be used only to convey the meaning prescribed for it in this Manual.

Section 7C.03 Crosswalk Markings

Support:

Crosswalk markings provide guidance for pedestrians who are crossing roadways by defining and delineating paths on approaches to and within signalized intersections, and on approaches to other intersections where traffic stops.

Crosswalk markings also serve to alert road users of a pedestrian crossing point across roadways not controlled by highway traffic signals or STOP signs.

At nonintersection locations, crosswalk markings legally establish the crosswalk.

Standard:

When transverse crosswalk lines are used, they shall be solid white, marking both edges of the crosswalk, except as noted in the Option. They shall be not less than 150 mm (6 in) nor greater than 600 mm (24 in) in width.

Guidance:

If transverse lines are used to mark a crosswalk, the gap between the lines should not be less than 1.8 m (6 ft). If diagonal or longitudinal lines are used without transverse lines to mark a crosswalk, the crosswalk should be not less than 1.8 m (6 ft) wide.

Crosswalk lines on both sides of the crosswalk should extend across the full width of pavement or to the edge of the intersecting crosswalk to discourage diagonal walking between crosswalks.

Crosswalks should be marked at all intersections on established routes to school where there is substantial conflict between motorists, bicyclists, and pedestrian movements, where students are encouraged to cross between intersections, or where students would not otherwise recognize the proper place to cross (see Figure 7A-1).

Crosswalk lines should not be used indiscriminately. An engineering study should be performed before they are installed at locations away from traffic control signals or STOP signs.

Option:

For added visibility, the area of the crosswalk may be marked with white diagonal lines at a 45-degree angle to the line of the crosswalk or with white longitudinal lines parallel to traffic flow. When diagonal or longitudinal lines are used to mark a crosswalk, the transverse crosswalk lines may be omitted.

Guidance:

The diagonal or longitudinal lines should be 300 to 600 mm (12 to 24 in) wide and spaced 300 to 1500 mm (12 to 60 in) apart. The spacing design should avoid the wheel paths.

Section 7C.04 Stop and Yield Lines**Standard:**

If used, stop lines shall consist of solid white lines extending across approach lanes to indicate the point at which the stop is intended or required to be made.

If used, yield lines (see Figure 3B-14) shall consist of a row of solid white isosceles triangles pointing toward approaching vehicles extending across approach lanes to indicate the point at which the yield is intended or required to be made.

Guidance:

Stop lines should be 300 to 600 mm (12 to 24 in) wide.

Stop lines should be used to indicate the point behind which vehicles are required to stop, in compliance with a STOP (R1-1) sign (see Figure 2B-1), traffic control signal, or some other traffic control device.

The individual triangles comprising the yield line should have a base 300 to 600 mm (12 to 24 in) wide and a height equal to 1.5 times the base. The space between the triangles should be 75 to 300 mm (3 to 12 in).

Option:

Yield lines may be used to indicate the point behind which vehicles are required to yield in compliance with a YIELD (R1-2) sign (see Figure 2B-1) or a Yield Here to Pedestrians (R1-5 or R1-5a) sign (see Figure 2B-2).

Guidance:

If used, stop and yield lines should be placed a minimum of 1.2 m (4 ft) in advance of and parallel to the nearest crosswalk line at controlled intersections, except for yield lines at roundabout intersections as provided for in Section 3B.24 and at midblock crosswalks. In the absence of a marked crosswalk, the stop line or yield line should be placed at the desired stopping or yielding point, but should be placed no more than 9 m (30 ft) nor less than 1.2 m (4 ft) from the nearest edge of the intersecting traveled way. Stop lines should be placed to allow sufficient sight distance to all other approaches to an intersection.

If used at an unsignalized midblock crosswalk, yield lines should be placed adjacent to the Yield Here to Pedestrians sign located 6.1 to 15 m (20 to 50 ft) in advance of the nearest crosswalk line, and parking should be prohibited in the area between the yield line and the crosswalk (see Figure 3B-15).

Stop lines at midblock signalized locations should be placed at least 12 m (40 ft) in advance of the nearest signal indication (see Section 4D.15).

Support:

Drivers who yield too close to crosswalks on multi-lane approaches place pedestrians at risk by blocking other drivers' views of pedestrians, and pedestrians' views of other vehicles.

Section 7C.05 Curb Markings for Parking Regulations

Standard:

Signs shall be used with curb markings in those areas where curb markings are frequently obliterated by snow and ice accumulation, unless the no parking zone is controlled by statute or local ordinance.

Guidance:

When curb markings are used without signs to convey parking regulations, a legible word marking regarding the regulation (such as “No Parking” or “No Standing”) should be placed on the curb.

Option:

Local highway agencies may prescribe special colors for curb markings to supplement standard signs for parking regulation.

Support:

Since yellow and white curb markings are frequently used for curb delineation and visibility, it is advisable to establish parking regulations through the installation of standard signs (see Sections 2B.39 through 2B.41).

Section 7C.06 Pavement Word and Symbol Markings

Support:

Word and symbol markings on the pavement are used for the purpose of guiding, warning, or regulating traffic. Symbol messages are preferable to word messages.

Standard:

Word and symbol markings shall be white. Word and symbol markings shall not be used for mandatory messages except in support of standard signs.

Guidance:

Letters and numerals should be 1.8 m (6 ft) or more in height. All letters, numerals, and symbols should be in accordance with the SDM (see Section 1A.11)

Word and symbol markings should not exceed three lines of information.

If a pavement marking word message consists of more than one line of information, it should read in the direction of travel. The first word of the message should be nearest to the road user.

The longitudinal space between word or symbol message markings, including arrow markings, should be at least four times the height of the characters for low speed roads, but not more than ten times the height of the characters under any conditions.

The number of different word and symbol markings used should be minimized to provide effective guidance and avoid misunderstanding.

When the SCHOOL marking is used, it should be placed at least 30 m (100 ft) in advance of the School Zone.

Except as noted in the Option below, pavement word and symbol markings should be no more than one lane in width.

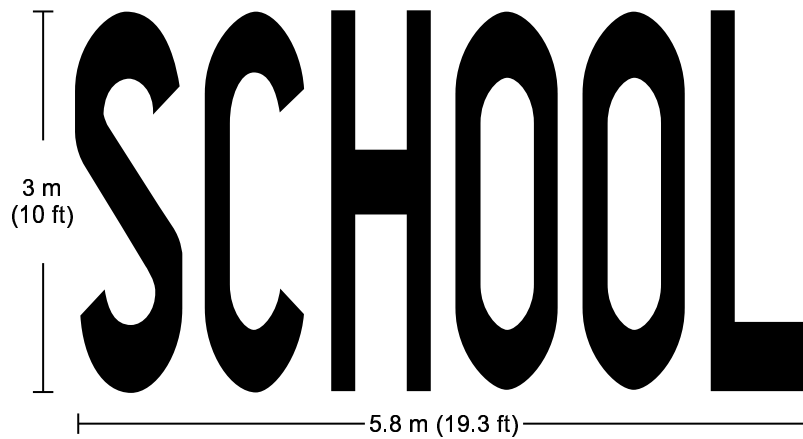
Option:

The SCHOOL word marking may extend to the width of two approach lanes (see Figure 7C-1).

Guidance:

If the two-lane SCHOOL word marking is used, the letters should be 3 m (10 ft) or more in height.

Figure 7C-1. Two-Lane Pavement Marking of “SCHOOL”



CHAPTER 7D. SIGNALS

Section 7D.01 General

Support:

Part 4 contains information regarding highway traffic signals in school areas. The School Crossing signal warrant is described in Section 4C.06.

Intentionally blank.

CHAPTER 7E. CROSSING SUPERVISION

Section 7E.01 Types of Crossing Supervision

Support:

There are two types of school crossing supervision:

- A. Adult control of pedestrians and vehicles by adult crossing guards or uniformed law enforcement officers; and
- B. Student control of only pedestrians with student patrols.

Information for the organization, operation, and administration of an adult crossing guard program are given in “Civilian Guards For School Crossings” (available from the Center for Public Safety of Northwestern University, 405 Church Street, Evanston, IL 60204) and “Adult School Crossing Guards” (available from the American Automobile Association, 1000 AAA Drive, Heathrow, FL 32746).

Information for the organization, administration and operation of a student patrol program are given in “Policies and Practices for School Safety Patrols” (available from the American Automobile Association, 1000 AAA Drive, Heathrow, FL 32746).

Section 7E.02 Adult Crossing Guards

Option:

Adult crossing guards may be used to provide gaps in traffic at school crossings where an engineering study has shown that adequate gaps need to be created (see Section 7A.03), and where authorized by law.

Adult crossing guards should be special law enforcement officers appointed by the local law enforcement agency.

The local law enforcement agency should be responsible for selection, training and supervision of adult crossing guards.

Section 7E.03 Qualifications of Adult Crossing Guards

Support:

High standards for selection of adult crossing guards are essential.

Guidance:

Adult crossing guards should possess the following qualifications:

- A. Average intelligence;
- B. Good physical condition, including sight, hearing, and mobility;
- C. Mental alertness;
- D. Neat appearance;
- E. Good character;
- F. Dependability; and
- G. Sense of responsibility for safety of students.

Section 7E.04 Uniform of Adult Crossing Guards and Student Patrols

Guidance:

Adult crossing guards should be uniformed so that road users and pedestrians can recognize them and respond to their signals. The uniforms should be distinctively different from those worn by regular law enforcement officers.

Standard:

Adult crossing guards shall wear high-visibility retroreflective safety apparel labeled as ANSI 107-1999 standard performance for Class 2 as described in Section 6E.02.

Student patrols shall wear high-visibility retroreflective safety apparel labeled as ANSI 107-1999 standard performance for Class 1 as described in Section 6E.02.

Guidance:

Law enforcement officers should wear high-visibility retroreflective material over their uniforms when directing nighttime operations.

Section 7E.05 Operating Procedures for Adult Crossing Guards

Guidance:

Adult crossing guards should not direct traffic in the usual law enforcement regulatory sense. In the control of traffic, they should pick opportune times to create a reasonably safe gap. At these times, they should stand in the roadway to indicate that pedestrians are about to use or are using the crosswalk, and that all vehicular traffic must stop.

Adult crossing guards should use a STOP paddle. The STOP paddle should be the primary hand-signaling device.

Standard:

The STOP paddle shall be an octagonal shape. The background of the STOP face shall be red with at least 150 mm (6 in) series capital white letters and border. The paddle shall be at least 450 mm (18 in) in size and have the word message STOP on both sides. The paddle shall be retroreflectorized or illuminated when used during hours of darkness.

Option:

The STOP paddle may be modified to improve conspicuity by incorporating red or white flashing lights on both sides of the paddle. The red or white flashing lights may be arranged in any of the following patterns:

- A. Two red or white lights centered vertically above and below the STOP legend;
- B. Two red or white lights centered horizontally on each side of the STOP legend;
- C. One red or white light centered below the STOP legend; or
- D. A series of eight or more small red or white lights no larger than 6 mm (0.25 in) in diameter along the outer edge of the paddle, arranged in an octagonal pattern at the eight corners of the STOP paddle. More than eight lights may be used only if the arrangement of the lights is such that it clearly conveys the octagonal shape of the STOP paddle.
- E. A series of white lights forming the shapes of the letters in the legend.

Standard:

If flashing lights are used on the STOP paddle, the flash rate shall be at least 50, but not more than 60, flash periods per minute.

Section 7E.06 Uniformed Law Enforcement Officers

Option:

Uniformed law enforcement officers may be used for school crossing supervision.

Guidance:

Uniformed law enforcement officers should be used for school crossing supervision on a temporary basis in emergency situations or at very hazardous school crossings where the use of adult crossing guards is not feasible.

Section 7E.07 Student Patrols

Guidance:

Student patrols should be authorized by the local school board. School authorities should be responsible for organizing, instructing and supervising patrols with the assistance of the local law enforcement agency.

OMUTCD - English units are preferred.

Option:

Student patrols may be used to direct and control pedestrians at crossings near schools where adequate gaps in traffic occur frequently enough so that gaps do not need to be created.

Student patrols may be used to direct and control pedestrians at signalized intersections where turning movements are not a significant problem, and may be used to assist adult crossing guards in the control of pedestrians at crossing locations used by large numbers of pedestrians.

Guidance:

Student patrols should not be responsible for directing vehicular traffic. They should not function as uniformed law enforcement officers or adult crossing guards.

Section 7E.08 Choice of Student Patrols**Guidance:**

Student patrols should be carefully selected. They should be students from the fifth grade or higher. Leadership and reliability should be determining qualities for patrol membership.

Parental approval should be obtained in writing before a student is used as a member of a student patrol.

Section 7E.09 Operating Procedures for Student Patrols**Guidance:**

Student patrols should use a flagging device to stop pedestrians behind the curb or edge of the roadway, and should allow them to cross only when there is an adequate gap in traffic.

Standard:

Flagging devices used during periods of twilight or darkness shall be retroreflective or illuminated.

Because they are not authorized to direct vehicular traffic, student patrols shall not use a STOP paddle.

Intentionally blank.

CHAPTER 7F. GRADE-SEPARATED CROSSINGS

Section 7F.01 Function

Option:

Grade-separated crossings may be used to physically separate the crossing of school pedestrian traffic and vehicular flow.

Section 7F.02 Types of Grade-Separated Crossings

Option:

Grade-separated crossings may be either overpasses over the highway or underpasses under the highway.

Guidance:

The design should follow the guidelines given in the published policies of the American Association of State Highway and Transportation Officials, such as “A Policy on Geometric Design of Highways and Streets” (see Section 1A.11).

Support:

Experience has shown that overpasses are more satisfactory than underpasses for pedestrian crossings, as overpasses are easier to maintain and supervise.

Section 7F.03 Criteria for Use of Grade-Separated Crossings

Guidance:

If use of the grade separation will be less convenient to pedestrians than an at-grade crossing, barriers or supervision should be considered to assure a satisfactory level of use.

Intentionally blank.